



High performance. Operational convenience.

Hayward SwimClear reaches new horizons in cartridge filter technology. A cluster of four reusable polyester cartridge elements provides a choice of 225, 325, 425 and now 525 ft.² of heavy-duty, dirt-holding capacity and extra-long filter cycles.

SwimClear filter tanks are created from new, stronger reinforced co-polymer for the ultimate in strength, durability and long life – even for the toughest applications and environmental conditions. Discover crystal clear results and reliable maintenance of SwimClear by Hayward – the first choice of pool professionals.

Pumps

Filters

Heaters

Heat Pumps

Cleaners

Lighting

Controls

Electronic Chlorine
 Generators

 Total System

Combination Pressure and Cleaning-Cycle-Indicator Gauge

gives visual indication when cartridge filter elements need cleaning.

NEW Manual Air Relief is a high capacity, rapid release manual air relief valve that bleeds air with a quick quarter turn of the lever.

Noncorrosive Top Closure Plate prevents elements from lifting and unfiltered water from backing to pool or spa during operation.

Quad-Cluster™ Cartridge Elements provide 225, 325, 425 or 525 ft.² of filter area and extra dirt-holding capacity for long filter cycles. Precision-engineered extruded core provides extra strength and superior flow.

Heavy-Duty, Tamper-Proof One-Piece Clamp securely fastens tank top and bottom together and allows quick access to all internal components without disturbing piping or connections.

Self-Aligned Tank Top and Bottom make access to servicing Quad-Cluster cartridge elements quick and easy.

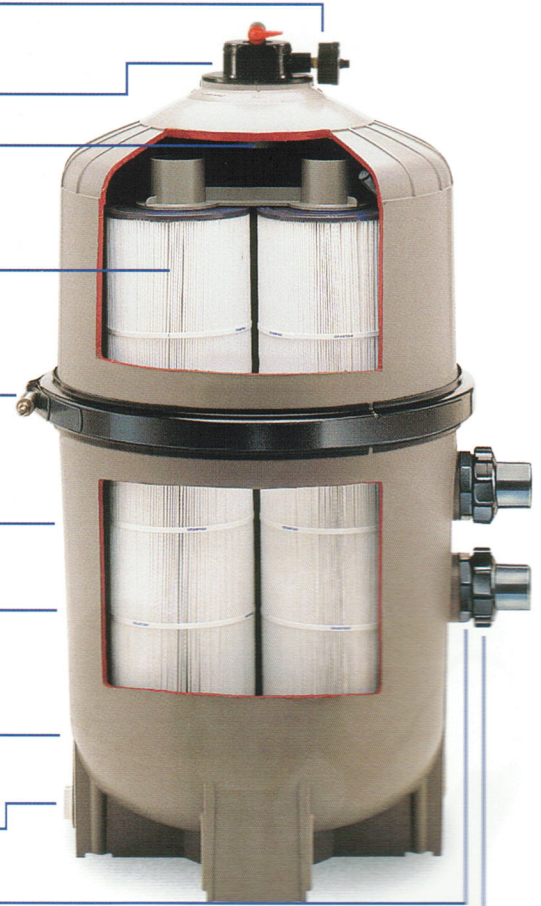
Improved High-Strength Filter Tank is made from extra durable, glass reinforced co-polymer to meet the demands of the toughest applications and environmental conditions, including in-floor cleaning systems.

Uniform Low-Profile Tank Base Design makes removal of cartridge elements fast and simple.

Full-Size 1½" Integral Drain provides fast clean-out and flushing.

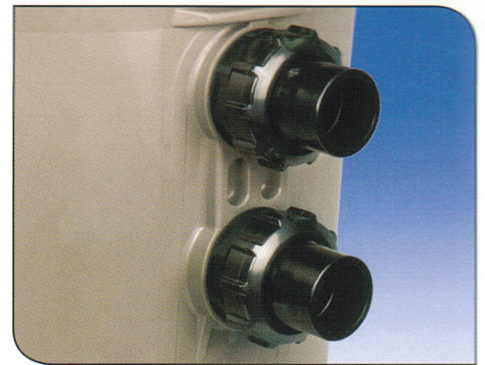
Noryl® Bulkhead Fittings for extra strength and heat resistance.

PVC Union Coupling Connection provides plumbing options of 1½" or 2" piping with 2" full flow internal piping for maximum performance.



SPECIFICATIONS – SWIMCLEAR QUAD-CLUSTER CARTRIDGE FILTERS

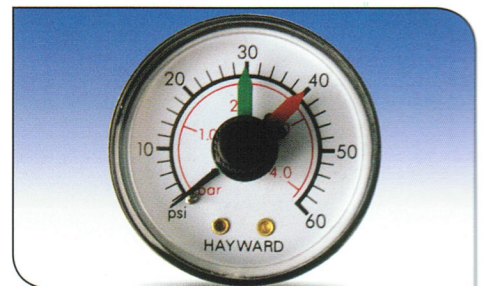
FILTER TYPE	Quad-Cluster cartridge elements: 225, 325, 425 and 525 ft. ² total (20.9, 30.2, 39.5 and 48.0 m ²)
FILTER TANK	Injection-molded glass reinforced co-polymer
FILTER ELEMENTS	Reinforced Polyester
PERFORMANCE RANGE	1/2 to 3 HP (30 to 150 GPM) .37 to 2.24 kW (114 to 568 LPM)
DIMENSIONS	C2025 – 23" W x 32 ½" H (58 cm x 81 cm) C3025 – 23" W x 34 ½" H (58 cm x 87 cm) C4025 – 23" W x 40 ½" H (58 cm x 102 cm) C5025 – 23" W x 46 ½" H (58 cm x 117 cm)



PVC Union Connections

PERFORMANCE DATA

MODEL NUMBER	EFFECTIVE FILTRATION AREA		DESIGN FLOW RATE*		TURNOVER			
	ft. ²	m ²	GPM	LPM	GALLONS		KILOLITERS	
					8 hrs.	10 hrs.	8 hrs.	10 hrs.
C2025	225	20.9	84*	318	40,320	50,400	153	191
C3025	325	30.2	122*	462	58,560	73,200	222	277
C4025	425	39.5	150**	568	72,000	90,000	273	341
C5025	525	48.8	150**	568	72,000	90,000	273	341



Pressure and Cleaning Gauge

*Based on NSF recommended rate for commercial use at .375 GPM/ft.²

**Determined by pump size and piping system hydraulics; 2" piping is recommended for flow rates equal to or greater than 90 GPM (341 LPM). Hayward doesn't recommend flow rates above 150 GPM.